

Photography/video

- It is not allowed to take pictures/videos on Hydro's sites without prior approval from the contact person
- Photography with flash is not permitted in the press area

Mobile phone

- It is not allowed to use mobile phones in production areas without prior agreement with the contact person
- Any use of mobile phones must be carried out standing in areas where there is no risk of accidents, etc.

Fire alarm

- If the fire alarm sounds, go to the assembly point together with the contact person and keep standing until the alarm is cancelled
- The assembly point is shown on escape routes in the production area and inside this folder

Accident events

- If you are exposed to an incident during your visit, you must immediately notify the contact person

Alcohol and euphoric substances

- It is not allowed to enjoy or be influenced by alcohol and/or euphoric substances at Hydro's addresses

Smoking

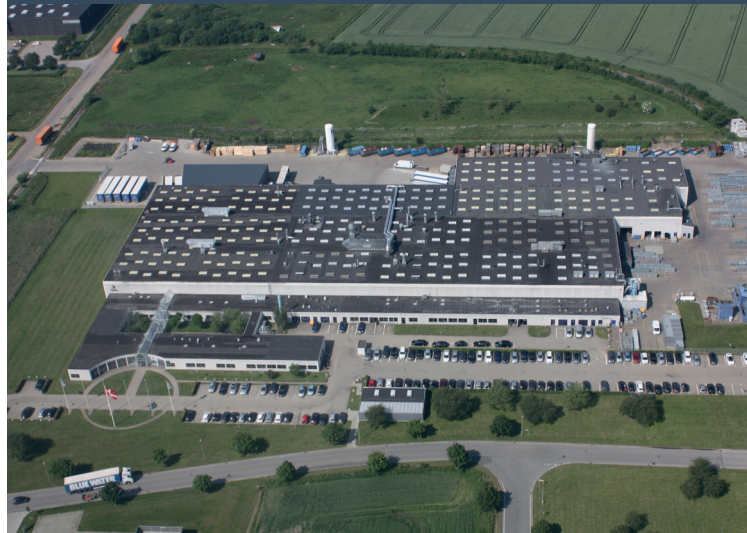
- Smoking is not allowed at Hydro's addresses

Penalties

- Violation of these rules may lead to eviction



Welcome to Hydro



Hydro Precision Tubing Tønder a.s
Hydrovej 6, 6270 Tønder

Safety information for guests and visitors

Hydro Precision Tubing Tønder a.s
Hydrovej 6, 6270 Tønder

Access

- Before entering, everyone must be registered at the reception
- The sign provided must always be visible
- Upon request, a secrecy agreement must be signed
- During your visit, you are assigned a contact person
- The contact person may be the requester of your stay, or be the person with whom you have made a prior agreement

Parking

- Reverse parking into the parking spot

Speed limits

- The speed limit at Hydro's addresses is max. 20 km/h.

Use of meeting rooms

- To avoid accidents please make sure to place bags, clothing, electronic equipment, and cables appropriately so that walking areas are free

Dress code in production area

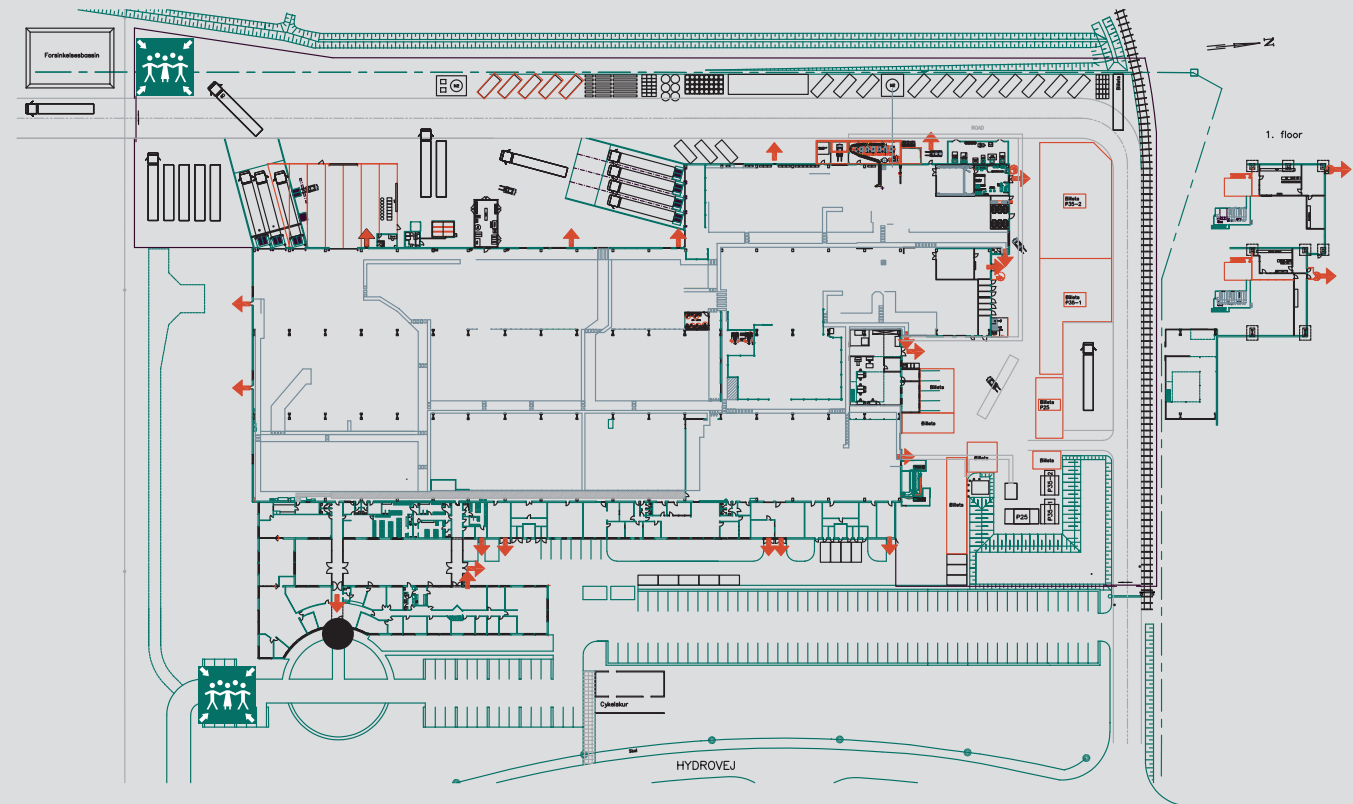
- Safety shoes, safety glasses, yellow vest, ear protection and safety helmet is mandatory
- Loose clothing such as scarves, ties, necklaces and similars should be hidden under the clothes or the yellow vest
- The yellow vest must be kept closed

During the tour in the production area

- Traffic/walking only on the marked walking areas
- Do not leave the contact person and please follow his/her instructions
- Please do not touch our products, equipment, etc. without prior approval

Safety

- If you go into the production area, do not go behind or in front of forklifts until the driver has signaled that you can cross the road



● Here you are



Assembly points



Escape routes